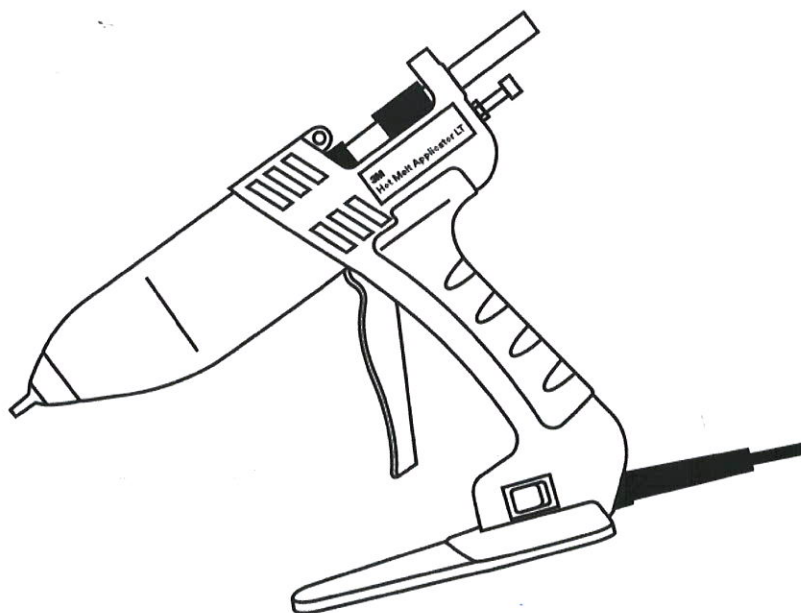


3M Science. Applied to Life.™

- 2 - 4 (GB) Hot Melt Applicator TC/TC-Q Low Temperature / Next Generation Owner's Manual
- 5 - 8 (FR) Applicateur de colles thermofusibles TC/TC-Q Low Temperature / Manuel d'utilisation
- 9 - 12 (DE) 3M™ Schmelzklebstoff-Auftragsgerät TC/TC-Q für niedrige Temperaturen / Bedienungsanleitung zur nächsten Generation
- 13 - 16 (IT) Applicatore Hot Melt 3M™ TC/TC-Q a bassa temperatura / Manuale utente - Nuova generazione
- 17 - 21 (ES) Aplicador de adhesivo termofusible 3M™ TC/TC-Q Baja Temperatura / Manual del Usuario
- 22 - 25 (NL) 3M™ Hot-melt-pistool TC/TC-Q Lage temperatuur / Volgende generatie-gebruikershandleiding
- 26 - 28 (SE) 3M™ Smältlimsapplikator TC/TC-Q Låg temperatur / Nästa generations användarmanual
- 29 - 31 (DK) 3M™ Hot Melt applikator TC/TC-Q Lav temperatur / Næste generations brugervejledning
- 32 - 34 (NO) 3M™ Smeltelimpistol TC/TC-Q Lav temperatur / Brukerveiledning for neste generasjon
- 35 - 37 (FI) 3M™-kuumaliimapistooli TC/TC-Q Matala lämpötila / Seuraavan sukupolven käyttöopas
- 38 - 41 (PT) Aplicador termofusível TC/TC-Q baixa temperatura 3M™ / Manual do Proprietário da Próxima Geração
- 42 - 45 (PL) Aplikator do klejów termotopliwych 3M™ TC/TC-Q niskotemperaturowych / Instrukcja obsługi
- 46 - 49 (RU) Аппликатор для термоплавого клея 3M™ TC/TC-Q, низкотемпературный / Руководство пользователя нового поколения
- 50 - 53 (TR) 3M™ Hot Melt Aplikatör TC/TC-Q Düşük Sıcaklık / Yeni Nesil Kullanım Kılavuzu



(GB) Use only with 3M™ Low Hot Melt Adhesives (FR) Utiliser uniquement des colles thermofusibles 3M à basse température (DE) Nur zur Verwendung mit 3M™ Niedrigtemperatur-Schmelzklebstoffen vorgesehen (IT) Utilizzare solo con adesivi Low Hot Melt 3M™ (ES) Úselo únicamente con adhesivos termofusibles de baja temperatura de 3M™ (NL) Alleen gebruiken met 3M™ Low hot-melt-lijmen (SE) Använd bara med 3M™ lågtemperatursmältlim (DK) Brug kun med 3M™ Low Hot Melt smeltelim (NO) Bruk kun med lavtemperert 3M™ Smeltelim (FI) Käytä vain matalissa lämpötiloissa sulavien 3M™-kuumaliimojen kanssa (PT) Utilizar apenas com adesivos de baixo termofusível da 3M™ (PL) Używać tylko z klejami termotopliwymi niskotemperaturowymi 3M™ (RU) Используйте только с низкотемпературными термоплавыми клеями 3M™. (TR) Yalnızca 3M™ Düşük Sıcaklık Hot Melt Yapıştırıcılar ile kullanın



3M™ Hot Melt Applicator TC/TC-Q Low Temperature — Next Generation Owner's Manual



Read instructions thoroughly before operating or performing any maintenance on 3M™ Hot Melt Applicator TC/TC-Q Low Temperature (LT).

Important Safety Instructions

EXPLANATION OF SIGNAL WORD CONSEQUENCES

⚠ WARNING	Indicates a hazardous situation which, if not avoided, could result in serious injury or death.
⚠ CAUTION	Indicates a hazardous situation which, if not avoided, could result in minor or moderate injury and/or property damage.
NOTICE	Indicates a situation which, if not avoided, could result in property damage.

⚠ WARNING

To reduce the risk of electrical shock or injury, observe the following safety rules:

- This appliance is not intended for use by persons (including children) with reduced physical, sensory or mental capabilities, or lack of experience and knowledge, unless they have been given supervision or instruction concerning use of the appliance by a person responsible for their safety.
- Children or persons needing supervision should be supervised to ensure they do not play with the appliance.
- Operate and service the applicator only as described in this manual.
- Connect the applicator only to a properly grounded outlet.
- Do not unplug the applicator by pulling on the cord. Grasp the plug, not the cord, to unplug.
- Do not handle the plug or applicator with wet hands.
- Do not use the applicator outdoors or on wet surfaces.
- Do not use the applicator if the cord or plug is damaged.
- Do not use the applicator if it is not working properly or has been damaged, submerged in water or left outdoors.

⚠ WARNING

- Use only authorized replacement parts. Use of other replacement parts may cause hazardous conditions or damage the applicator. Repairs should only be performed by a qualified repair person.
- If the supply cord is damaged, it must be replaced by a qualified repair person or returned to 3M. Please contact your local 3M sales representative for assistance.
- DO NOT USE NEAR HIGHLY FLAMMABLE MATERIALS.
- If an extension cord is used, use an extension cord that complies with local electrical requirements and is properly rated for your application. Use of an improper extension cord may cause electrical shock.
- Do not clean or remove the 3M™ Hot Melt Adhesive with solvent. May cause fire. For additional health and safety information see the product label and Safety Data Sheet for 3M™ Hot Melt Adhesive used.
- Do not modify the plug provided with the applicator or use with an adaptor or ungrounded outlet. Improper grounding connection of the applicator may cause electric shock. Check with a qualified electrician or service person to determine whether the plug is properly grounded. If the plug will not fit

the outlet, have a qualified electrician or service person install the proper outlet.

⚠ WARNING

This tool must be placed on its stand when not in use; do not leave the tool unattended when switched ON.

- Place the tool on its stand after use and allow it to cool down before storage.
- This tool is intended for use at altitudes NOT exceeding 2187 yd. / 2000m.

⚠ CAUTION

- Avoid contact with **hot** adhesive and applicator tip. May cause burns. Wear personal protective equipment (PPE) per workplace and industry standard operating practices and procedures when using and cleaning or changing tip. **KEEP TIP POINTED AWAY FROM BODY PARTS.**
- Do not damage the white sleeve.
- Do not pull adhesive sticks from the rear of the applicator while in operation. Removing adhesive from the rear may cause molten adhesive flow out of the rear of the applicator which may cause burns and damage the applicator.
- **USE ONLY 3M™ LOW MELT LT ADHESIVE STICKS. OTHER ADHESIVES MAY CAUSE BACKMELT AND POSSIBLE INJURY.** Use of other adhesives may damage the applicator or result in hazardous conditions.

NOTICE

- To avoid charring or plugging of the tip, extrude at least one adhesive stick every three hours that the applicator is turned on.
- Do not overtighten. Overtightening damages threads.

⚠ WARNING

Prior to making any repairs on the applicator, make certain that the applicator is at room temperature and that electrical service lines have been disconnected. Failure to disconnect the electrical power source could result in electrical shock or damage to the applicator. Applicator must be completely assembled before connecting applicator to electrical outlet. Allow applicator to cool to room temperature before servicing. Failure to do so may cause burns. Read owner's manual before servicing.

NOTICE

- Do not use high-temperature adhesives with low-temperature applicators.

⚠ CAUTION

To reduce the risks associated with hazardous work positions, which if not avoided, could result in minor or moderate injury:

- Avoid raising the elbow, bending the wrist, reaching, and bending over when using this device.

General Information

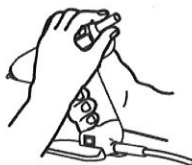
Thumb pressure on the feeder pushes the adhesive stick into the heat block. The adhesive is melted by the heat block and pushed out through the tip. A fixed thermostat on the heat block maintains heat block temperature.

Start-Up and Operation

⚠ WARNING

USE ONLY 3M™ HOT MELT ADHESIVE STICKS. OTHER ADHESIVES MAY CAUSE BACKMELT AND POSSIBLE INJURY. DO NOT USE NEAR HIGHLY FLAMMABLE MATERIALS.

1. Plug the 3M™ Hot Melt Applicator TC/TC-Q into a 220-240Vac grounded receptacle. Allow 5 to 10 minutes for heat-up.
2. Pull the feeder back toward the rear of the applicator.
3. Snap a 3M™ Hot Melt Adhesive Stick into the holder.



⚠ CAUTION

Do not force adhesive. Excessive force can damage the applicator and cause molten adhesive to flow out the rear.

4. Gently press the feeder forward and push the adhesive into the heat block. Melted adhesive will flow from the tip.

⚠ WARNING

TIP AND VALVE ARE HOT. KEEP TIP POINTED AWAY FROM BODY PARTS.

NOTICE

To avoid charring or plugging of the tip, extrude at least one adhesive stick every three hours that the applicator is turned on.

Shut-Down

1. Unplug the applicator.
2. Extrude one adhesive stick to cool down the applicator.

Preventive Maintenance

⚠ CAUTION

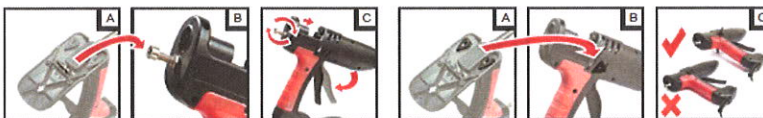
Avoid contact with hot adhesive and applicator tip. May cause burns. Wear Personal Protective Equipment (PPE) per workplace and industry standard operating practices and procedures when using and cleaning or changing tip. KEEP TIP POINTED AWAY FROM BODY PARTS.

To maintain proper operation, follow these steps.

1. Inspect nozzle tip daily. Make sure it is clean and clear of foreign matter.
2. Keep the adhesive clean and free of airborne contaminants.

Do not connect to the main supply at this point!

1. Attach the tool stand. **1**
2. Load the tool by inserting an adhesive stick into the rear. **2**
3. Operate the trigger to feed the stick forward until resistance is felt. **3**
4. Connect to main supply and switch on tool. **4**
5. Wait 5 minutes to warm.
6. Operate the trigger to extrude adhesive until the stick has been completely drawn into the rear of the tool.
7. Insert a new stick into the tool. **2**
8. To switch off the tool, disconnect from the mains supply.



Troubleshooting

PROBLEM	PROBABLE CAUSE	CORRECTION
Low or no adhesive flow	No heat	Check to see that 220-240Vac service is on. Thermal fuse in the thermostat may have blown.
	Shutdown procedure was not observed	Allow the applicator to heat up for at least 30 minutes.
	Plugged tip	If the applicator was left on overnight, the tip may be plugged. This may block adhesive flow and cause backmelt.



Read instructions thoroughly before operating or performing any maintenance on 3M™ Hot Melt Applicator TC/TC-Q Low Temperature (LT).

Important Safety Instructions

EXPLANATION OF SIGNAL WORD CONSEQUENCES

▲ WARNING	Indicates a hazardous situation which, if not avoided, could result in serious injury or death.
▲ CAUTION	Indicates a hazardous situation which, if not avoided, could result in minor or moderate injury and/or property damage.
NOTICE	Indicates a situation which, if not avoided, could result in property damage.

▲ WARNING

To reduce the risk of electrical shock or injury, observe the following safety rules:

- This appliance is not intended for use by persons (including children) with reduced physical, sensory or mental capabilities, or lack of experience and knowledge, unless they have been given supervision or instruction concerning use of the appliance by a person responsible for their safety.
- Children or persons needing supervision should be supervised to ensure they do not play with the appliance.
- Operate and service the applicator only as described in this manual.
- Connect the applicator only to a properly grounded outlet.
- Do not unplug the applicator by pulling on the cord. Grasp the plug, not the cord, to unplug.
- Do not handle the plug or applicator with wet hands.
- Do not use the applicator outdoors or on wet surfaces.
- Do not use the applicator if the cord or plug is damaged.
- Do not use the applicator if it is not working properly or has been damaged, submerged in water or left outdoors.

▲ WARNING

- Use only authorized replacement parts. Use of other replacement parts may cause hazardous conditions or damage the applicator. Repairs should only be performed by a qualified repair person.
- If the supply cord is damaged, it must be replaced by a qualified repair person or returned to 3M. Please contact your local 3M sales representative for assistance.
- DO NOT USE NEAR HIGHLY FLAMMABLE MATERIALS.
- If an extension cord is used, use an extension cord that complies with local electrical requirements and is properly rated for your application. Use of an improper extension cord may cause electrical shock.
- Do not clean or remove the 3M™ Hot Melt Adhesive with solvent. May cause fire. For additional health and safety information see the product label and Safety Data Sheet for 3M™ Hot Melt Adhesive used.
- Do not modify the plug provided with the applicator or use with an adaptor or ungrounded outlet. Improper grounding connection of the applicator may cause electric shock. Check with a qualified electrician or service person to determine whether the plug is properly grounded. If the plug will not fit

the outlet, have a qualified electrician or service person install the proper outlet.

▲ WARNING

This tool must be placed on its stand when not in use; do not leave the tool unattended when switched ON.

- Place the tool on its stand after use and allow it to cool down before storage.
- This tool is intended for use at altitudes NOT exceeding 2187 yd. / 2000m.

▲ CAUTION

- Avoid contact with **hot** adhesive and applicator tip. May cause burns. Wear personal protective equipment (PPE) per workplace and industry standard operating practices and procedures when using and cleaning or changing tip. **KEEP TIP POINTED AWAY FROM BODY PARTS.**
- Do not damage the white sleeve.
- Do not pull adhesive sticks from the rear of the applicator while in operation. Removing adhesive from the rear may cause molten adhesive flow out of the rear of the applicator which may cause burns and damage the applicator.
- **USE ONLY 3M™ LOW MELT LT ADHESIVE STICKS. OTHER ADHESIVES MAY CAUSE BACKMELT AND POSSIBLE INJURY.** Use of other adhesives may damage the applicator or result in hazardous conditions.

NOTICE

- To avoid charring or plugging of the tip, extrude at least one adhesive stick every three hours that the applicator is turned on.
- Do not overtighten. Overtightening damages threads.

▲ WARNING

Prior to making any repairs on the applicator, make certain that the applicator is at room temperature and that electrical service lines have been disconnected. Failure to disconnect the electrical power source could result in electrical shock or damage to the applicator. Applicator must be completely assembled before connecting applicator to electrical outlet. Allow applicator to cool to room temperature before servicing. Failure to do so may cause burns. Read owner's manual before servicing.

NOTICE

- Do not use high-temperature adhesives with low-temperature applicators.

⚠ CAUTION

To reduce the risks associated with hazardous work positions, which if not avoided, could result in minor or moderate injury:

- Avoid raising the elbow, bending the wrist, reaching, and bending over when using this device.

General Information

Thumb pressure on the feeder pushes the adhesive stick into the heat block. The adhesive is melted by the heat block and pushed out through the tip. A fixed thermostat on the heat block maintains heat block temperature.

Start-Up and Operation

⚠ WARNING

USE ONLY 3M™ HOT MELT ADHESIVE STICKS. OTHER ADHESIVES MAY CAUSE BACKMELT AND POSSIBLE INJURY. DO NOT USE NEAR HIGHLY FLAMMABLE MATERIALS.

1. Plug the 3M™ Hot Melt Applicator TC/TC-Q into a 220-240Vac grounded receptacle. Allow 5 to 10 minutes for heat-up.
2. Pull the feeder back toward the rear of the applicator.
3. Snap a 3M™ Hot Melt Adhesive Stick into the holder.



⚠ CAUTION

Do not force adhesive. Excessive force can damage the applicator and cause molten adhesive to flow out the rear.

4. Gently press the feeder forward and push the adhesive into the heat block. Melted adhesive will flow from the tip.

⚠ WARNING

TIP AND VALVE ARE HOT. KEEP TIP POINTED AWAY FROM BODY PARTS.

NOTICE

To avoid charring or plugging of the tip, extrude at least one adhesive stick every three hours that the applicator is turned on.

Shut-Down

1. Unplug the applicator.
2. Extrude one adhesive stick to cool down the applicator.

Preventive Maintenance

⚠ CAUTION

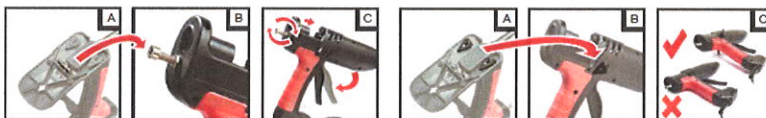
Avoid contact with hot adhesive and applicator tip. May cause burns. Wear Personal Protective Equipment (PPE) per workplace and industry standard operating practices and procedures when using and cleaning or changing tip. KEEP TIP POINTED AWAY FROM BODY PARTS.

To maintain proper operation, follow these steps.

1. Inspect nozzle tip daily. Make sure it is clean and clear of foreign matter.
2. Keep the adhesive clean and free of airborne contaminants.

Do not connect to the main supply at this point!

1. Attach the tool stand. [1]
2. Load the tool by inserting an adhesive stick into the rear. [2]
3. Operate the trigger to feed the stick forward until resistance is felt. [3]
4. Connect to main supply and switch on tool. [4]
5. Wait 5 minutes to warm.
6. Operate the trigger to extrude adhesive until the stick has been completely drawn into the rear of the tool.
7. Insert a new stick into the tool. [2]
8. To switch off the tool, disconnect from the mains supply.



Troubleshooting

PROBLEM	PROBABLE CAUSE	CORRECTION
Low or no adhesive flow	No heat	Check to see that 220-240Vac service is on. Thermal fuse in the thermostat may have blown.
	Shutdown procedure was not observed	Allow the applicator to heat up for at least 30 minutes.
	Plugged tip	If the applicator was left on overnight, the tip may be plugged. This may block adhesive flow and cause backmelt.

PROBLEM	PROBABLE CAUSE	CORRECTION
Low or no adhesive flow	Plugged tip	CAUTION: Do not force adhesive. Clear the tip with a small nail or paper clip. Extrude the remaining adhesive stick and one new adhesive stick to clear the opening.
	Backmelt	Remove the clip and feeder from the track of the applicator. Push the existing adhesive stick into the white sleeve approximately 3/4 in. (19mm) with a new adhesive stick. Remove the new adhesive stick before it melts and look into the white sleeve. Look for a thin skin of adhesive around the inside of the white sleeve. Scrape this skin toward the heat block. CAUTION: Do not damage the white sleeve. Extrude one adhesive stick to clear the sleeve. TO AVOID BACKMELT: Observe the Start-Up and Shut-Down procedures. Do not force adhesive through the applicator.
Dripping* nozzle	Backmelt	Refer to preceding paragraph on backmelt.
	Worn valve assembly	Replace valve with Repair Kit #9234.
	Contaminated adhesive	Keep adhesive clean and free of contamination.

*Thermal expansion may cause some dripping during start-up. This is normal.

Avoiding Problems

- Ensure that tool has reached temperature before operating.
- Do not leave tool switched on for long periods without use. If tool is not to be used for more than 40 minutes, switch off and restart when required.
- Never lay the tool on its side. Always use stand provided, the optional bench stand or the suspension unit.
- Only use adhesives designed for use with this tool.
- Never remove a partially used glue stick. This can lead to irreparable damage.
- Hotmelt glue can be used instead of nails, staples, tapes, and liquid glues. However they should not be used in place of structural connections when heavy loads are involved.
- Do not use hotmelt glue for objects that are exposed to extreme heat. Some glues that can be used in this tool will soften at 140°F (60°C).

Guarantee and Repairs

This tool is guaranteed against faulty workmanship and materials for a period of 12 months from the date of purchase. Within this warranty period the manufacturers undertake, at their discretion, to either repair or replace any tool proved to be defective (proof of purchase will be required for verification). This guarantee is invalidated if the tool is opened, or modified in any way, or if adhesive formulations other than those supplied by the tool's manufacturer are used. Warranty claims attributable to improper, or careless, use or handling, and to normal wear, are excluded from this guarantee.

The supplier's and manufacturer's only obligation shall be to replace such tools that are proved to be defective. Neither supplier nor manufacturer shall be liable for any injury, loss or damage, direct or consequential, arising out of the use, or the inability to use, this tool. The user shall determine the suitability of this product for its intended use, and the user assumes all risks and liability whatsoever in connection therewith.

The manufacturer reserves the right to improve or modify this product without prior notice.

For help with fault finding, and for optional parts, please visit our website: poweradhesives.com.

WARRANTY, LIMITED REMEDY, AND DISCLAIMER

Unless a different warranty is specifically stated on the applicable 3M product packaging or product literature (in which case such warranty governs), 3M warrants that each 3M product meets the applicable 3M product specification at the time 3M ships the product. 3M MAKES NO OTHER WARRANTIES OR CONDITIONS, EXPRESS OR IMPLIED, INCLUDING, BUT NOT LIMITED TO, ANY IMPLIED WARRANTY OR CONDITION OF MERCHANTABILITY, FITNESS FOR A PARTICULAR PURPOSE, OR ARISING OUT OF A COURSE OF DEALING, CUSTOM, OR USAGE OF TRADE. If a 3M product does not conform to this warranty, then the sole and exclusive remedy is, at 3M's option, replacement of the 3M product or refund of the purchase price.

LIMITATION OF LIABILITY

Except for the limited remedy stated above, and except to the extent prohibited by law, 3M will not be liable for any loss or damage arising from or related to the 3M product, whether direct, indirect, special, incidental, or consequential (including, but not limited to, lost profits or business opportunity), regardless of the legal or equitable theory asserted, including, but not limited to, warranty, contract, negligence, or strict liability.

Imported into the EU by: 3M Wroclaw Sp.z o.o, Kowalska 143, 51-424, Wroclaw, Poland (3M EU)

Imported in the UK by: 3M United Kingdom Plc, 3M Centre, Cain Road, Bracknell, Berkshire, RG12 8HT

Recommended Disposal



This product contains electrical and electronic components and must not be disposed of using standard refuse collection. Please consult local directives for disposal of electrical and electronic components.