

3M Filter Selection

How to fit the 3M Filters to 3M Masks

To make life easy, 3M Filters attachment system has been engineered to fit the entire range of 3M half and full face masks. The reliable 3M Bayonet Filter Fixing System allows the filters to be clicked into place quickly and securely.



CHFILTERFITSHEET

Gas & Vapour Filters (3M 6000 series)



1. Line up the 3 indented lines on the inner side of the filter with the arrow on the half mask and push together.
2. Turn the filter ¼ turn clockwise until the filter locks into place.



Combined Gas & Vapour & Particulate filters (3M 6000 series with the 3M 5000 series)



1. Place the white particulate filter (3M 5000 series) into the plastic retainer so that the printed side will face the gas & vapour filter, then put the gas and vapour filter on top and press firmly to click into place.
2. Fit to the mask as described for Gas & Vapour Filters.

Particulate Filters (3M 2000 series)



1. Align the filter bayonet fitting with the mask bayonet fitting.
2. Rotate ¼ turn clockwise to attach.

How long will the filter last?

Gas/vapour filters (3M 6000 Series filters) should be changed as soon as "breakthrough" occurs (i.e. safe levels of hazard can be smelt or tasted)*

Particulate filters (3M 2000 Series filters) should be changed when breathing resistance becomes difficult (i.e. breathing is against a clogged filter)

For substances with low warning properties (i.e. with no or little smell or taste e.g. isocyanate paints), supplied air respirators should be used rather than a mask and filters, since "breakthrough" cannot be detected with this type of substance.

* It is advised to not routinely rely on smell or taste but to change filters before breakthrough. Your company risk assessment and certain 3M filters may also specify different instructions on a more regular filter change schedule. Please read all manufacturers instructions before use.

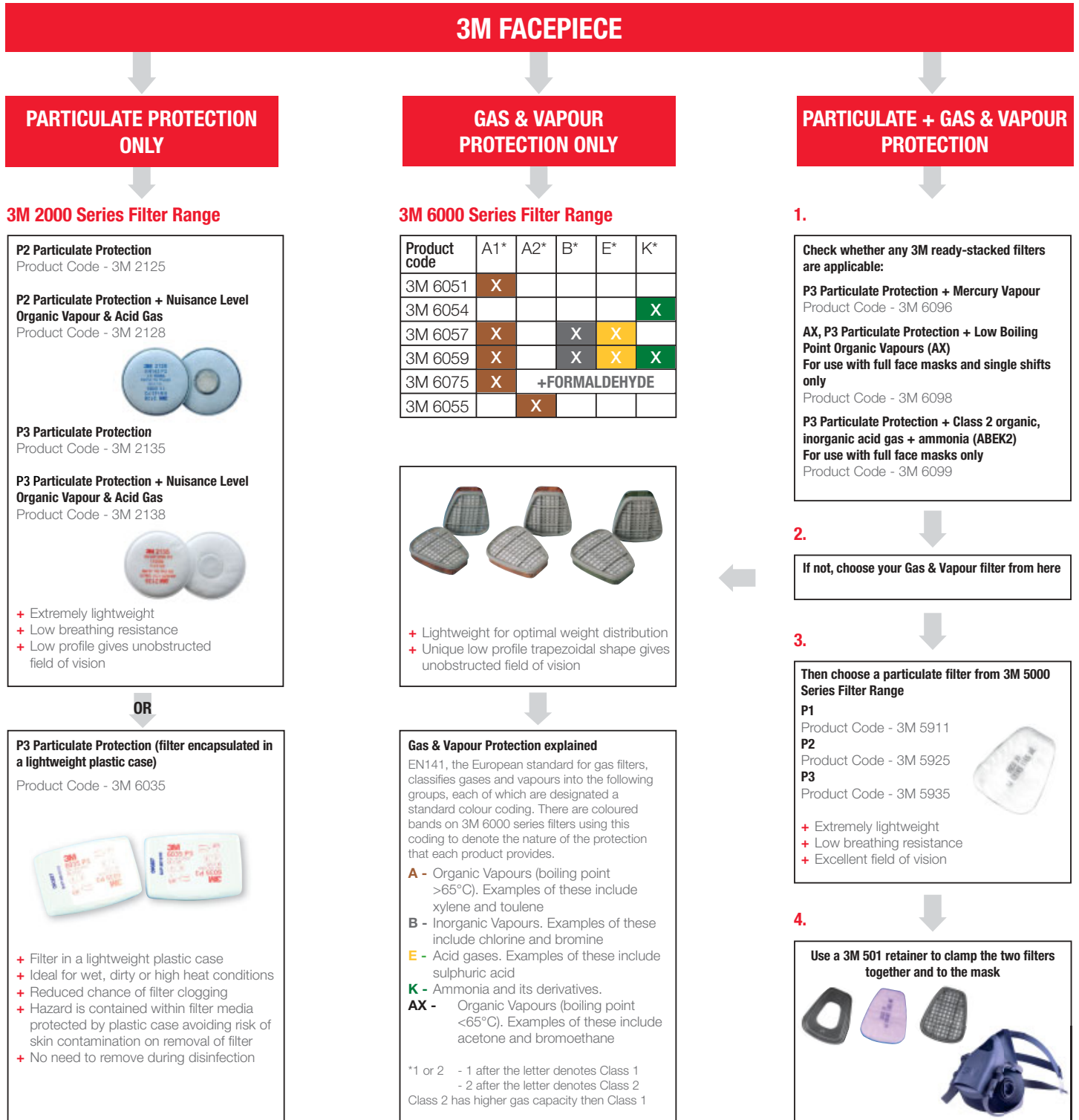


3M Filter Selection

Which Filter Should I Use?

Depending on the filter you select, your 3M respirator can protect against particulates, gases and vapours or a combination of the two. To select the most appropriate filter for a particular chemical or hazard, please:-

- Refer to the diagram below for assistance
- Visit the 3M online Filter Selector at www.3m.com/uk/ohes, click on the link to 3M Respirator Product Selector, select the nature and level of hazardous substance you wish to protect against and a list of suggested filters will be generated.
- Or call the 3M Health & Safety Helpline on **0870 60 800 60** for advice and samples



For further help and assistance, please call the 3M Health & Safety Helpline on:

(UK) **0870 60 800 60** (Ireland) **1 800 320 500**

or visit www.3m.com/uk/ohes

