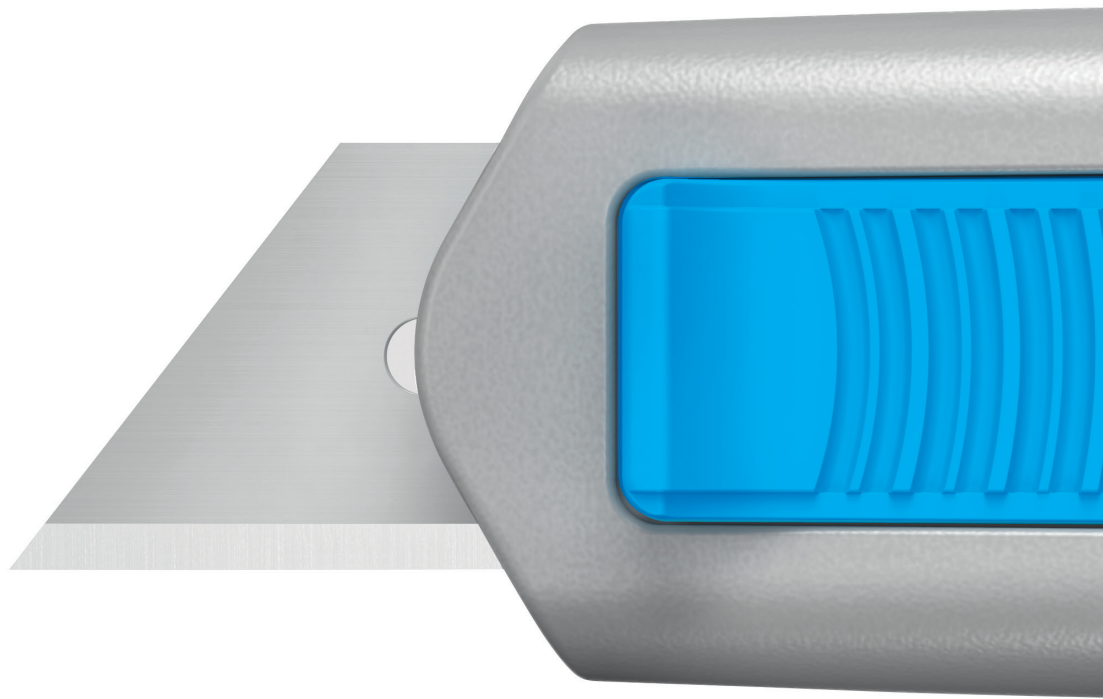


SECUNORM 525
CLEAR SHAPE, CLEAR CUT.



ENJOY SAFETY
MADE IN SOLINGEN

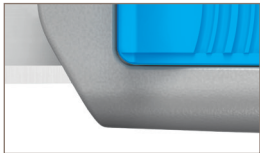
martor

SECUNORM 525

NO. 52500410

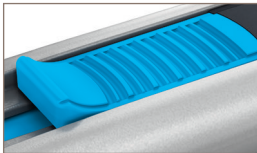


Original size



Robust handle

The aluminium handle is already familiar from the SECUNORM PROFI25. The handle and a newly developed plastic insert form a perfect team to ensure that your SECUNORM 525 is equipped to meet even the toughest tasks.



Optimised slider

A firm hold and grip are typical MARTOR characteristics. The SECUNORM 525 is no different. Its slider has a grooved structure and is especially large giving the ideal conditions for comfortable, "hands-on" work – even when wearing gloves.



Safe blade changing

The blade change button gives easy access to the blade, which is also held in place by a magnet. A further practical feature is that the blade cover can be lifted and locked in an open position.



Large cutting depth

The large cutting depth is ideal for thicker cardboard, material off a roll, rubber and much more. But the SECUNORM 525 is not only very versatile, it can also be relied on for high frequency cutting tasks.



Secure hold

For secure fastening, the SECUNORM 525 is equipped with a practical lanyard hole, another reason why it could become a constant companion. You then reduce risks two-fold: the risk of loss and the risk of cutting injuries.

**A versatile tool – with great qualities.
With trapezoid blade.**

The SECUNORM 525 is a straightforward safety knife in every way. The ergonomic aluminium handle sits firmly and comfortably in the hand. Its robust design and large cutting depth of up to 21 mm means the SECUNORM 525 easily manages a variety of cutting materials, for example 3-ply cardboard. An unobstructed view of the blade also allows you to cut particularly precisely. In every task, the proven automatic blade retraction protects you from cutting injuries.

PRODUCT FEATURES

Technical features

 High safety	 Safer blade change (with magnet)
 Very abrasion resistant	 Very ergonomic
 2-cutting edge blade	 Cutting depth
 Ceramic blade compatible	 For right and left handers
 Lanyard hole	 Printable for promotional purposes

Main cutting materials

 Cardboard: up to 3-ply	 Wrapping, stretch and shrink foil
 Plastic strapping band	 Slabbing material off a roll
 Foam, polystyrene	 PVC

Installed blade



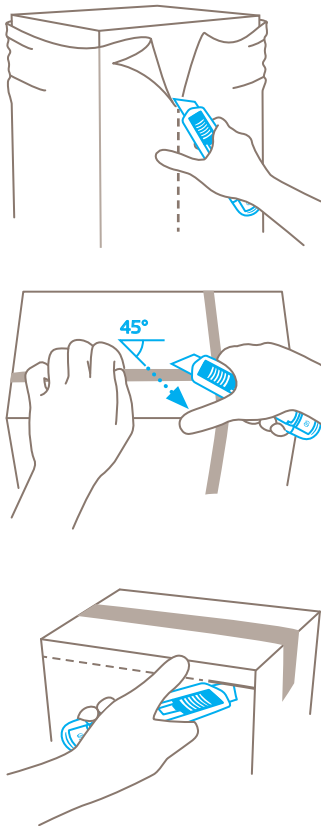
Optional blade

	NO. 199 0.63 mm, deep-edged, stainless
	NO. 60099 0.63 mm, rounded blade tips, deep-edged
	NO. 60099C 0.65 mm, ceramic, rounded blade tips, deep-edged
	NO. 98 0.63 mm

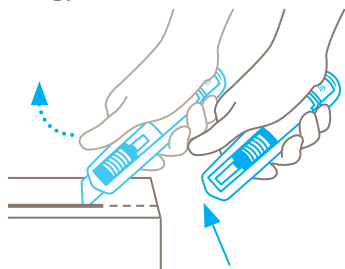
Certificates and awards



Application



Safety technology



Automatic blade retraction – a high degree of safety






The automatic blade retraction of the SECUNORM 525 guarantees a high degree of safety from cut injuries. As soon as you have started to cut, take your thumb off the slider. Then the blade will retract into the handle immediately after leaving the material being cut.

THE PERFECT FIT FOR ALL. DOES THE PERFECT JOB.

SECUNORM 525

- › For large cutting depths
- › Ergonomic handle for left and right handers
- › Very abrasion proof thanks to the aluminium
- › Automatic blade retraction
- › GS-certified for approved safety

PRODUCT DETAILS

Order No.	NO. 52500410.02
Packaging unit	1 in single unit box (10 in multipack)
Knife size (L x W x H)	143 x 17 x 31 mm
Main material	Aluminium
Weight	81.0 g
Cutting depth	21 mm
Spare blade Packaging unit Size (L x W x Thickness)	NO. 99.70 (10 in dispenser) 60 x 19 x 0.63 mm
Certified	GS certificate NO. 179480-7120-55094- 2020
Accessories	
BELT HOLSTER S WITH CLIP	 NO. 9920
HOLSTER SMALL	 NO. 9842
USED BLADE CONTAINER	 NO. 9810
WALL MOUNT BRACKET USED BLADE CONTAINER	 NO. 9845
SAFEBOX	 NO. 108000

CONTACT AND SERVICE

What makes our cutting solutions even safer?
Our advisory services! We are always on hand,
to give advice, to provide you with training ma-
terial, to meet with you in person if necessary.

You will find further information on our website:
www.martor.com



At a glance: the safety poster shows the most important functions and correct usage – perfect for your workplace.



From the first cut to changing the blade, our video will show you the best way to use this knife.



Everything you want to know: dimensions, properties, special features and more about our cutting tools can be found in the technical data sheet.



Still have questions? You can reach our service department on [+49 212 73870-0](tel:+49212738700)