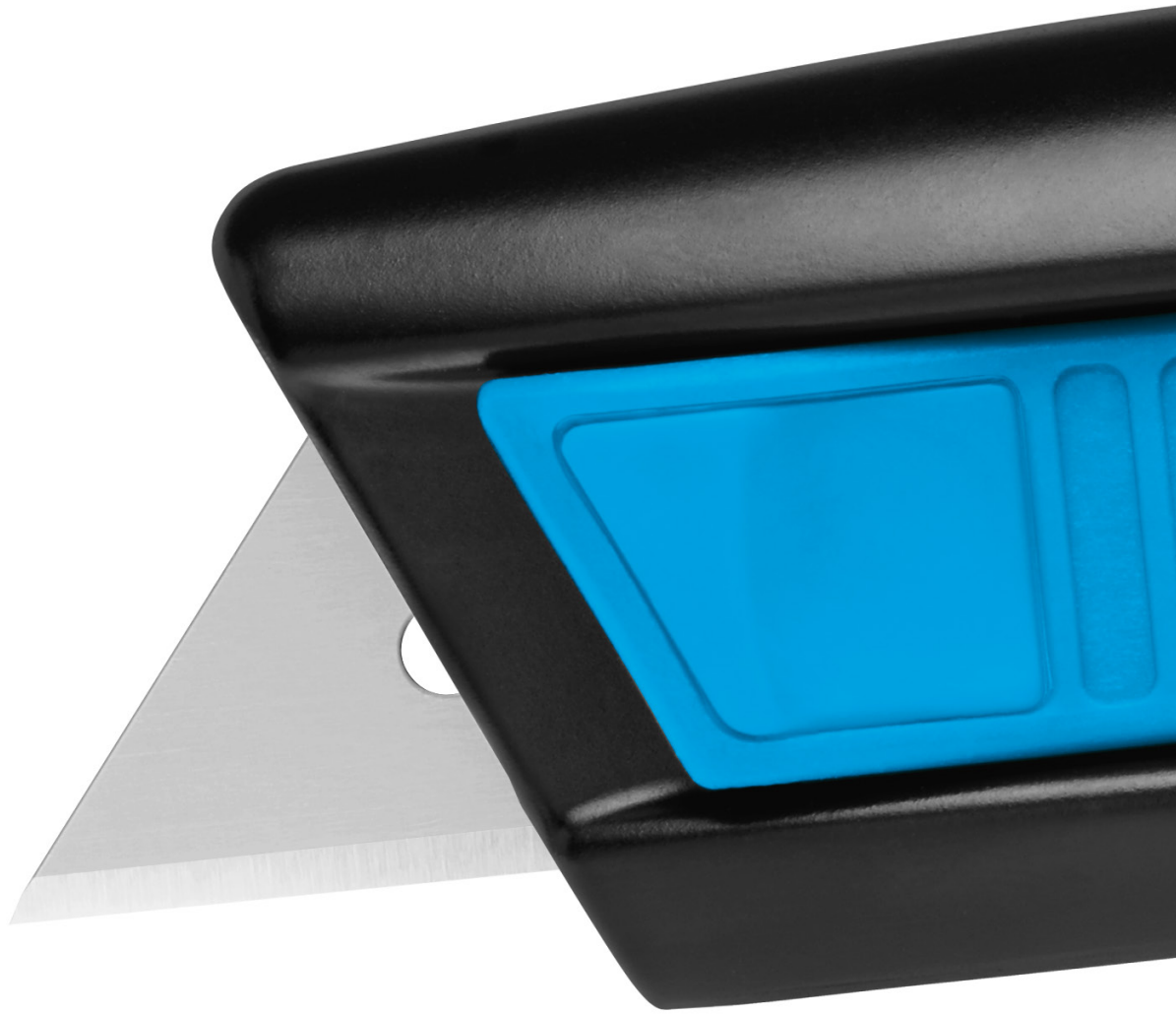


SECUPRO MEGASAFE  
EXTREMELY TOUGH. EXTREMELY STRONG.



ENJOY SAFETY  
MADE IN SOLINGEN

**martor**

# SECUPRO MEGASAFE

NO. 116001



Original size



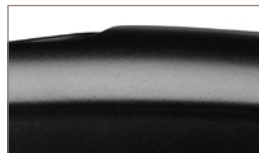
#### Robust handle

The body of our top quality SECUPRO MEGASAFE is 100% aluminium. And ultimately, 100% robust. You can master all manner of standard cutting materials with this cutter. Even multi-layered ones.



#### Change without opening

Blade change is easy and safe. Simply push down on the back end of the rocker device located on the topside of the cutter, and push the slider completely forward. The blade is ready for changing.



#### Perfect handling

The lightly rounded handle fits particularly well in your hand. Your thumb doesn't get a raw deal either: soft grip on the the slider makes for a pleasant, slip-resistant resting pad.



#### Double-sided slider

With the right hand? With the left hand? No need to ask this question! The SECUPRO MEGASAFE is fitted with a slider that's accessible from both sides. Choose for yourself!



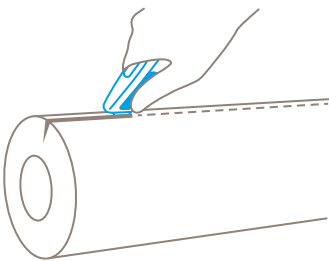
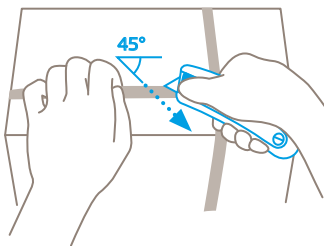
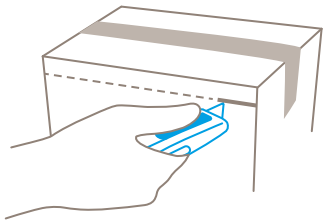
#### Double-edged blade

Before you need to change the quality blade, you have the chance to turn it over once. Usage time of the blade is doubled and fatigue is held at bay: with a simple flip of the blade, your SECUPRO MEGASAFE will cut like new.

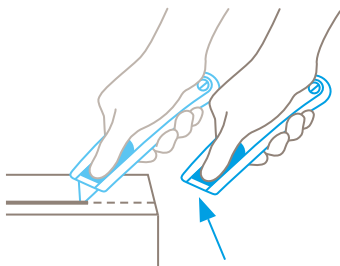
## Quality that's visible. With trapezoid blade.

Would you like to have a safety knife with a large blade extension? Or are you looking for a cutting tool that can cope with the toughest of tasks? In both cases, the SECUPRO MEGASAFE is an excellent choice. Thanks to a cutting depth of up to 20 mm, this safety knife doesn't shy away from a challenge. And no matter your task, safety is always guaranteed; the fully automatic blade retraction functions even when you decide to not fully extend the blade.

### Application



### Safety technology



#### Fully automatic blade retraction – a very high degree of safety

The fully automatic blade retraction of the SECUPRO MEGASAFE guarantees a very high degree of safety from cut injuries. The blade withdraws into the handle immediately after leaving the material being cut. Even if the slider is still being activated.

### PRODUCT FEATURES

#### Technical features

 Very high safety	 Tool-less blade change
 Very abrasion resistant	 Ergonomic
 2-cutting edge blade	 Cutting depth
 Ceramic blade insertable	 Soft grip
 For right and left hands	 Printable for promotional purposes

#### Main cutting materials

 Cardboard: up to 3-ply	 Plastic strapping band
 Bagged goods	 Slabbing material off a roll
 Wrapping, stretch, and shrink foil	 Tape

#### Installed blade

	<b>NO. 99</b> 0.63 mm, deep-edged
--	-----------------------------------

#### Optional blade

	<b>NO. 199</b> 0.63 mm, deep-edged, stainless
	<b>NO. 60099</b> 0.63 mm, rounded blade tips, deep-edged
	<b>NO. 60099C</b> 0.65 mm, ceramic, rounded blade tips, deep-edged
	<b>NO. 98</b> 0.63 mm

#### Certificates and awards







# YOU CAN FEEL THE QUALITY.

## SECUPRO MEGASAFE

- › High-quality aluminium handle
- › Fully automatic blade retraction
- › Notable cutting depth (cuts up to 3-ply cartons)
- › Very easy blade change
- › GS-certified for approved safety

## PRODUCT DETAILS

<b>Order No.</b>	NO. 116001.02
<b>Packaging unit</b>	1 in single unit box (10 in multipack)
<b>Knife size (L x W x H)</b>	153 x 26 x 38 mm
<b>Main material</b>	Aluminium
<b>Weight</b>	140.0 g
<b>Cutting depth</b>	20.1 mm
<b>Spare blade Packaging unit Size (L x W x Thickness)</b>	NO. 99.70 (10 in dispenser) 60 x 19 x 0.63 mm
<b>Certified</b>	GS certificate NO. S 60112078
<b>Accessories</b>	
BELT HOLSTER M WITH CLIP	 NO. 9921
USED BLADE CONTAINER	 NO. 9810
WALL MOUNT BRACKET USED BLADE CONTAINER	 NO. 9845
SAFEBOX	 NO. 108000

## CONTACT AND SERVICE

What makes our cutting solutions even safer? Our advisory services! We are always on hand, to give advice, to provide you with training material, to meet with you in person if necessary.

You will find further information on our website:  
[www.martor.com](http://www.martor.com)



At a glance: the safety poster shows the most important functions and correct usage – perfect for your workplace.



From the first cut to changing the blade, our video will show you the best way to use this knife.



Everything you want to know: dimensions, properties, special features and more about our cutting tools can be found in the Technical Data Sheet.



Still have questions? You can reach our service department on [+49 212 73870-0](tel:+49212738700)